

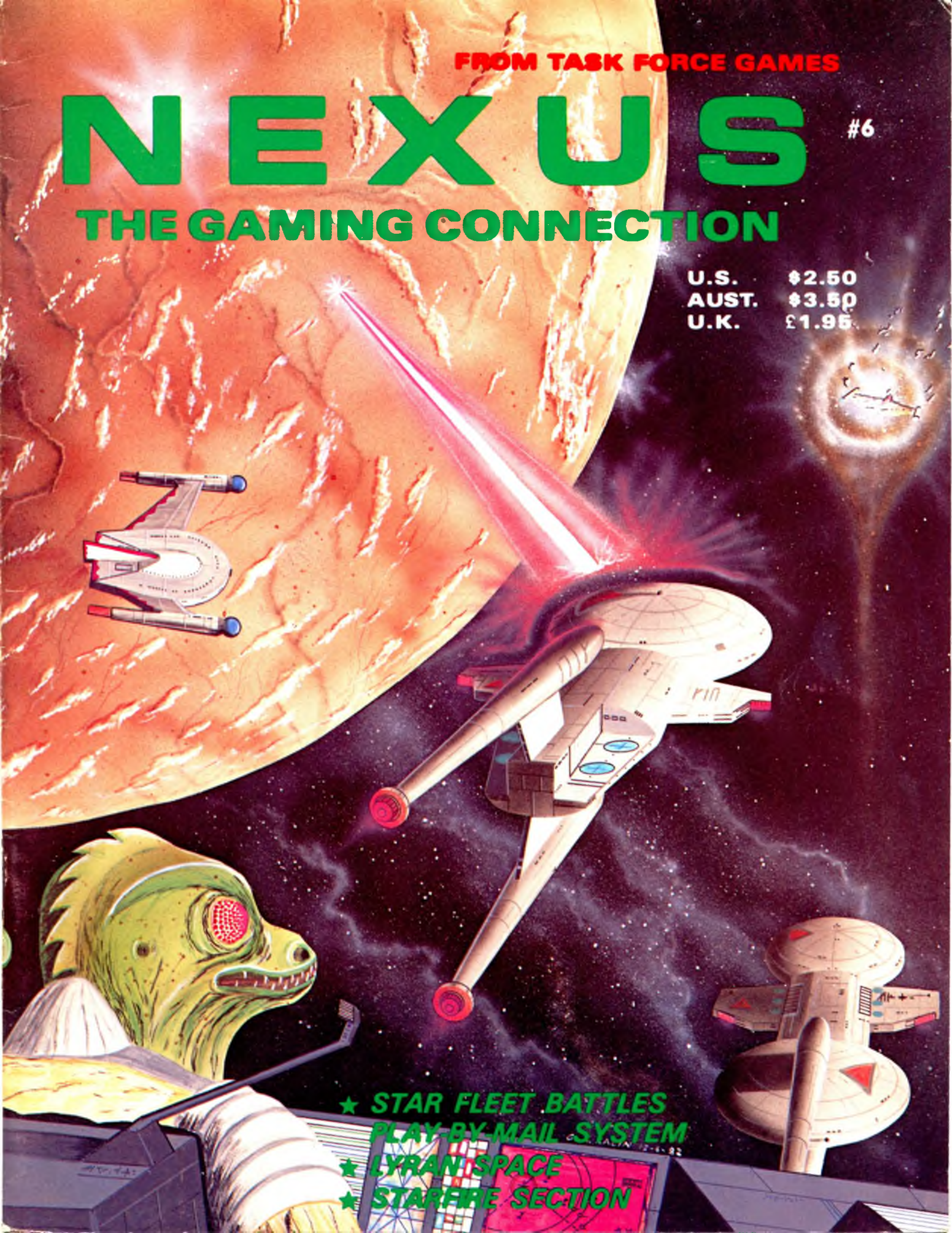
FROM TASK FORCE GAMES

NEXUS

#6

THE GAMING CONNECTION

U.S. \$2.50
AUST. \$3.50
U.K. £1.95



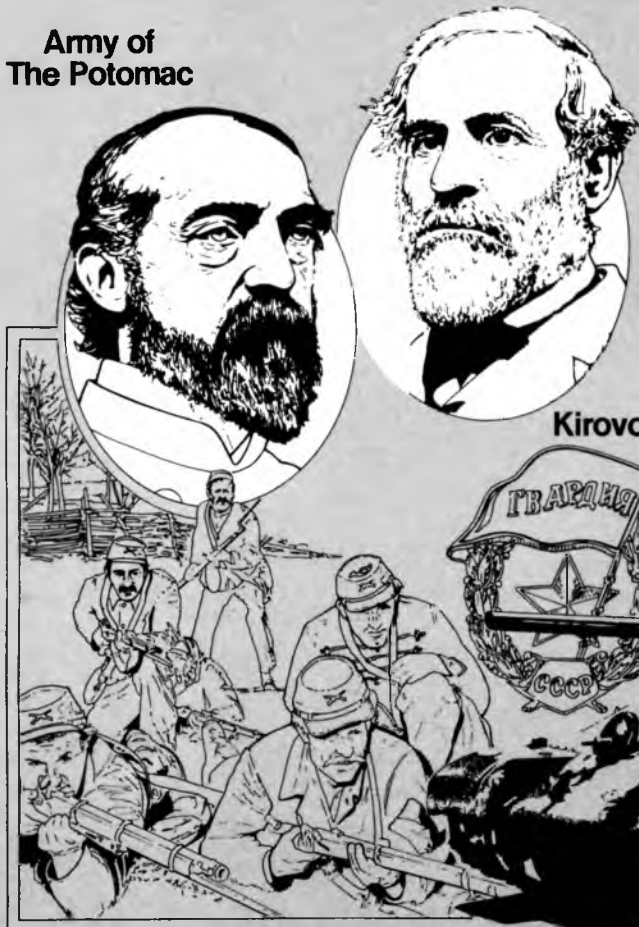
- ★ STAR FLEET BATTLES
PLAY-BY-MAIL SYSTEM
- ★ LYRAN SPACE
- ★ STARRIFIRE SECTION

NEW FROM 3W!

Publishers of The Wargamer

Four well-researched, fully tested historical games of moderate complexity.

Army of The Potomac



Top designers, careful development, and colorful graphics combine to make the publication of these games an exciting moment for the hobbyist. All four games are in book-case format, with mounted mapboards. From 3W, producers of high quality, exclusively historical games.

ARMY OF THE POTOMAC

Covers the eastern theatre of the Civil War, with scenarios covering Bull Run, the Peninsula, Gettysburg, and Grant vs. Lee, plus a campaign game. Links with **Army of the Tennessee** to cover the whole Civil War. 34" x 22" mounted mapboard, 400 counters.

Designer Mark McLaughlin. Complexity 3.

KIROVOGRAD

Epic east front armor battle, January 5-16, 1944. 34" x 22" mounted mapboard, 300 counters (battalion-regiment-brigade-division). At the start of each turn players secretly and simultaneously issue "orders" to each of their formations

(divisions, corps). These orders — assault, retreat, defense, reserve, mobile — determine what units may do in the ensuing movement and combat phases, and also which player has the initiative (moves first).

A fast and playable game from top designer Jack Radey. Complexity 4.

ARMY OF THE TENNESSEE

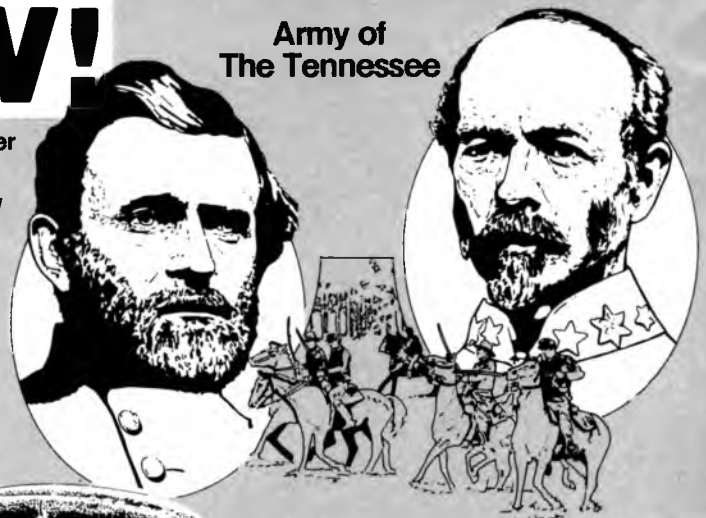
Covers the western theatre of the Civil War, with scenarios covering Shiloh, Vicksburg, Chattanooga and Atlanta, plus a campaign game. Links with **Army of the Potomac** to cover the whole Civil War. 400 counters, 34" x 22" mounted mapboard.

Designer Mark McLaughlin. Complexity 3.

LAWRENCE OF ARABIA

Lawrence captures the dramatic Palestine campaign of 1918, in which the

Army of The Tennessee



Kirovograd

Lawrence of Arabia

combination of airpower and mechanized breakthrough foreshadowed the Blitzkriegs of World War II. A crucial guerrilla role is played by the Arabs under Lawrence. 34" x 22" full color mounted mapboard, 260 counters.

Complexity 2, designer Roger Nord.

To Order:

Call 805-927-5439
or send \$19.95 check or money order only, to:

World Wide Wargames

P.O. Box F
Cambria, CA 93428-0295
California residents add 6½% sales tax.
Trade Inquiries Welcome: 805-927-5624
Also watch for the latest issue of **The Wargamer**, the independent wargaming monthly.



The History People

OPENING LINES

With this special **STAR FLEET UNIVERSE** Issue, we have completed a year's worth of **NEXUS**. Those of you who are counting will realize that it has taken us over a year to get out a year's worth of **NEXUS**. Although we have done about as good a job of staying on schedule as the government has done with reducing the unemployment, we must be doing something right. **NEXUS** is now the number two *Adventure Gaming* magazine in terms of circulation. (We will let you guess which is number one.)

This issue of **NEXUS** also begins a period of transition. The first change is that I have moved from Associate Editor to Editor in Chief. While Mike did an excellent job in launching the magazine, there were just too many problems associated with having the editorial office in Florida, and doing the paste-up, printing, etc. out of our Amarillo office. It is hard enough to co-ordinate a magazine without having to deal with the problems of communicating via the post and Ma Bell. Readers should not, however, expect any sweeping changes in format or editorial policy.

The second change will have a much more apparent effect on the reader. Beginning with issue #8, **NEXUS** will be a quarterly magazine with more pages and an increase in price. But before you take pen in hand to write a nasty letter, read on — there will actually be several benefits for the subscribers.

Let's face it; going quarterly is not that great a change with regard to when you will receive your magazine. As you know, we have had problems staying on schedule anyway. Going quarterly will allow us to set a schedule that we can meet. Beginning with #8, issues will be mailed about the 5th of the middle month of each quarter.

How does this affect subscribers? If you have paid for a year's subscription, this means you have paid for six issues. You will still receive **NEXUS** for a year and half (or three years, if you subscribed for twelve issues). This means you will be receiving the more expensive issues at our current rate.

But there is more good news. Anyone who subscribes, or re-subscribes, before December 31,

Continued on Page 29—

TABLE OF CONTENTS

STAR FLEET UNIVERSE

<i>Behind The Glory of the Heroes — Joseph McCarthy</i>	
<i>Star Fleet Fiction</i>	2
<i>The Next Frontier</i>	5
<i>SFB Play-By-Mail System</i>	7
<i>Introducing the Commander's Rulebook</i>	16
<i>Lyran Space</i>	17

STARFIRE

<i>Starfall</i>	30
<i>Timeline of Events Through Second Interstellar War</i>	30

ARTICLE

<i>Battlewagon Scenario — Richard Puchstein</i>	
<i>The Battle of San Bernadino Straits</i>	37

DEPARTMENTS

<i>Opening Lines</i>	1
<i>Shavings From the Workbench</i>	27
<i>Interface — Computer Gaming</i>	39
<i>Cartoon — Space Trader Vic</i>	40

The source for **NEXUS** subscriptions in Australia is:
 Military Simulations Pty. Ltd.
 18 Fonceca
 Mordialloc, Vic. 3195

NEXUS is published bi-monthly by Task Force Games, 1110 N. Fillmore, Amarillo, TX 79107.

It is available at hobby shops and bookstores or by subscription. Subscription rate is \$10 for six issues or \$17.50 for twelve issues. Overseas subscription rates are available on request. Send all subscription correspondence to the above address.

All material is copyright ©1983 by Task Force Games unless otherwise noted.

Send all articles and artwork to 1110 N. Fillmore, Amarillo, TX 79107.

Printing and typesetting by Standard Printing Co. of Amarillo, TX.

NEXUS

Publisher: Allen D. Eldridge

Editor: R. Vance Buck

Associate Editor / Star Fleet Universe:

Stephen V. Cola

Associate Editor / Starfire:

David Weber

Associate Editor

and **Advertising:** Rick L. Buck

Circulation Manager: Lucretia Perritt

Art in this issue:

Cover - Gary Kalin

pages 2, 31 - Bill Keith, Jr.

page 28 - Richard S. Kerr

page 40 - Bruce Whitefield